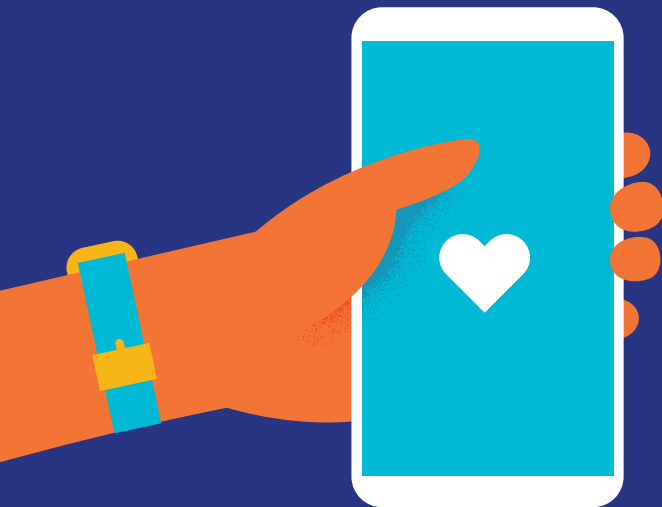




Starts virtual, stays personal

UnitedHealthcare NavigateNOW is a health plan offering a single, digital entry point to quick and convenient medical, behavioral and pharmaceutical services that begin virtually and connect to in-person care when necessary.



Start now

Visit [uhc.com/startsimple](https://www.uhc.com/startsimple) or contact your broker or UnitedHealthcare representative

How it works, what it costs

Anita's care journey experience

Anita is an established patient who turned to her personal Optum Virtual Care Team for health needs. Her cost-share was \$0.



Starts virtual

Anita has a video visit to address a sore throat. The Care Team sends her to a local Optum care provider for a strep throat test.



Stays personal

Anita is greeted at the door—they are expecting her and have an exam room set up. She tests positive for strep throat and is prescribed an antibiotic.



Savings opportunities

Anita's prescription is filled at the local pharmacy of her choice. Her cost-share is \$0 for a Tier 1 medication.

Built for convenience and affordability

24/7

access to care and support with online scheduling, and on-demand, same-day appointments

15%

lower cost than UnitedHealthcare Level Funded Choice Plus*

\$0 copays

for primary care visits, behavioral health visits and virtual visits for urgent care

\$0 copays

for Tier 1 prescriptions

*With a similar plan design and the same member cost shares.

Example for illustrative purposes only.

The Optum Care Team is part of Optum Virtual Care which is an affiliate of UnitedHealth Group family of companies.

Administrative services provided by United HealthCare Services, Inc. or their affiliates.

The policies have exclusions, limitations, reductions of benefits, and terms under which the policy may be continued in force or discontinued. These products are not available in all states.

B2B EI21864851.0 8/21 © 2021 United HealthCare Services, Inc. All Rights Reserved. 21-656108-F